

IMPACTS

DEMONSTRATION PROGRAM IMPACTS

Residents



70-100%

developed new or deeper connections



60-90%

increased leadership capacity



70-90%

increased sense of belonging



60-86%

increased sense of safety



70-73%

became more likely to ask for or offer help to a neighbour



30-100%

gained access to additional community services

Community-based organizations

- ✓ Expanded reach/outreach
- ✓ Better leveraging of resources

Housing Operators

- ✓ Improved relationships with residents
- ✓ Enhanced brand profile
- ✓ More stable tenancies
- ✓ Supportive benefits from partnerships
- ✓ Better emergency preparedness
- ✓ Reduced conflict
- ✓ Happier staff
- ✓ Organizational policy change and improvement

SYSTEMS & POLICY IMPACTS



Sociable Design Policy Activities

Participants report:

90%

growing awareness and motivation around sociable design policy and practice

90%

gained practical tools or resources or new ideas

96%

new ideas of how to make key housing policy changes in their jurisdiction

92%

increased their understanding of multi-solving opportunities with sociable design and climate resilience

IMPACTS OF WORKING TOGETHER



HNC Partners Agree...

95%

HNC is contributing to greater impact by working collectively, as opposed to single organizations working on their own on these issues

100%

HNC has been effective at generating relevant research and evidence-based data

84%

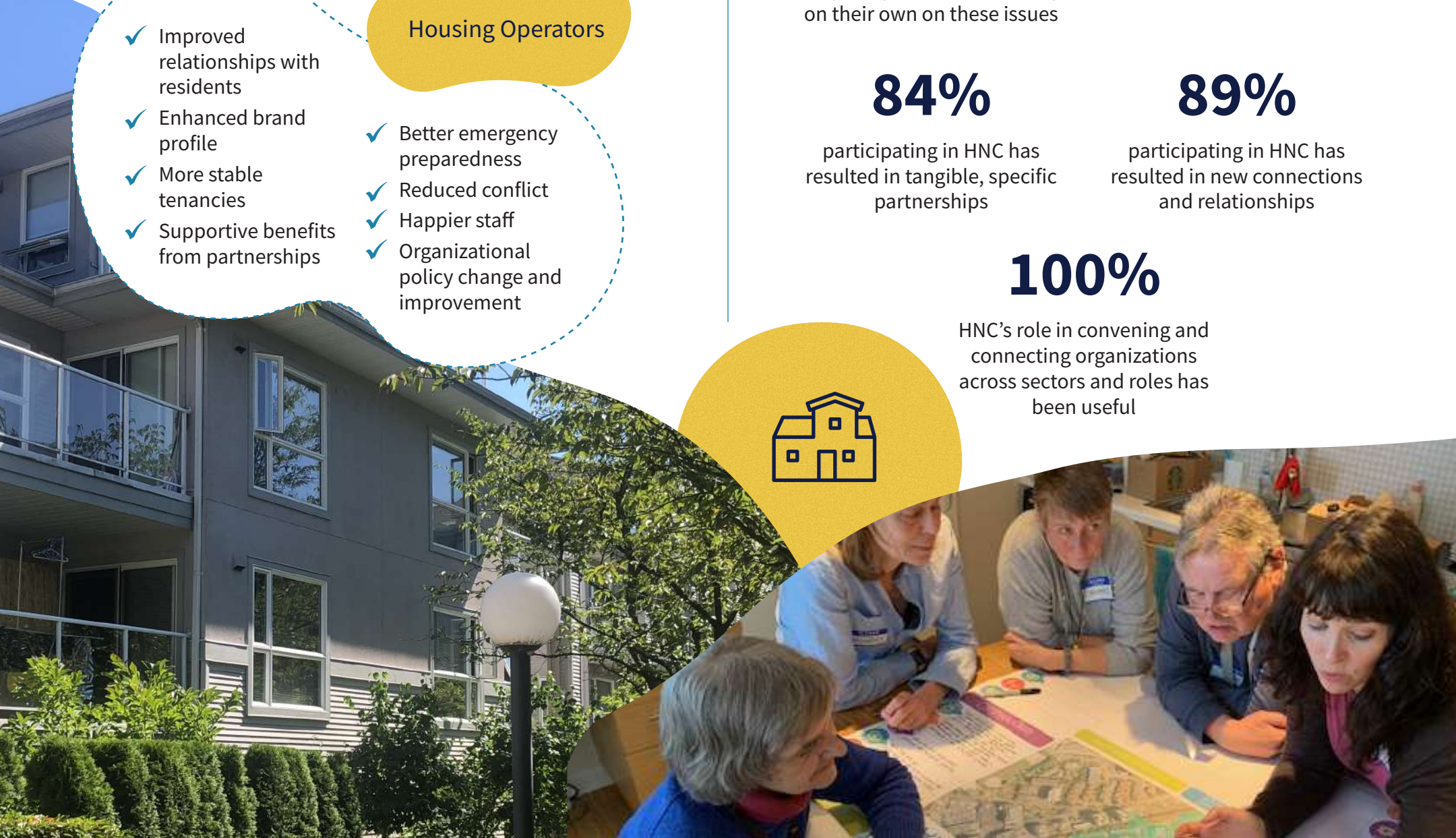
participating in HNC has resulted in tangible, specific partnerships

89%

participating in HNC has resulted in new connections and relationships

100%

HNC's role in convening and connecting organizations across sectors and roles has been useful



DEMONSTRATION COMMUNITY-BUILDING PROGRAMS

Testing, evaluating, and scaling promising community-building approaches to increase neighbourliness, social connectedness, and resilience in multi-unit housing pilot sites.



Catalyst Community Developments

Non-market rental
Community Connections

Concert Properties

Market rental
Community Connectors

Brightside Community Homes

Non-market rental
Community Engagement

Seniors Services Society of BC

In partnership with City of New Westminster

West End Seniors Network

Close to Home

Building Resilient Neighbourhoods

Connect & Prepare and Neighbours Helping Neighbours

Trained 27 Delivery Partner Organizations

These demonstration programs engaged:



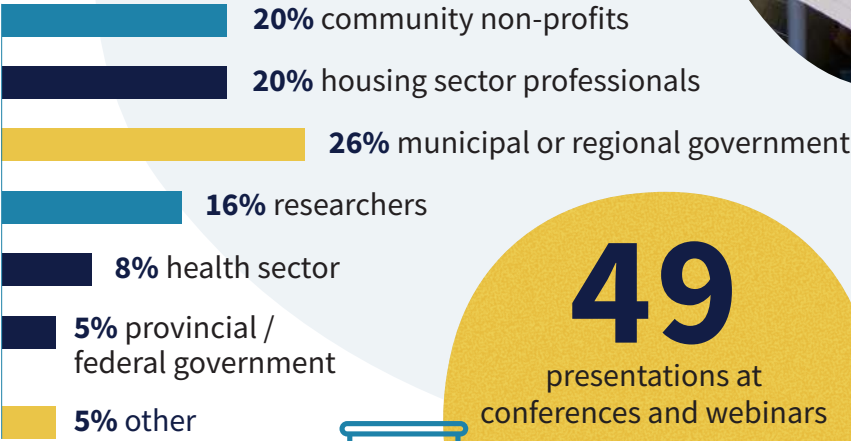
HOUSING INDUSTRY & POLICY ENGAGEMENT



Engaging the housing sector and policymakers to influence systems change and implementing opportunities to foster healthier and more resilient communities through shifts in policy, programming, and practice

STORY SHARING & KNOWLEDGE MOBILIZATION

Building and informing the field through knowledge dissemination and sharing stories and evidence related to improved programming, management, design, and community culture of multi-unit housing.



ACTION LEARNING & RESEARCH

Peer learning and evaluation to inspire community building, systems change, and shifts in professional practice.



- SFU Gerontology
- SFU Urban Studies
- SFU Health Sciences
- Happy Cities

Highlights

- 138 publications
- 13 research assistants
- 50 Community of Practice (CoP) Sessions
- 2 building audit initiatives focused on sociable design for aging in place



Highlights

Policy Discussion Paper which resulted in enabling Regional Policy in Metro 2050 (Metro Vancouver' Regional Growth Strategy)

Focus Group with 21 market and nonmarket housing operators

Housing and Health Research Round Table, engaging 13 organizations

Work with local/regional governments on sociable design policy, including:

11 workshops and webinars which engaged 1050 people

Partnerships with 6 Metro Vancouver local governments

Engagement of 31 local governments from other parts of Canada

7 articles, papers, reports, toolkits/guides